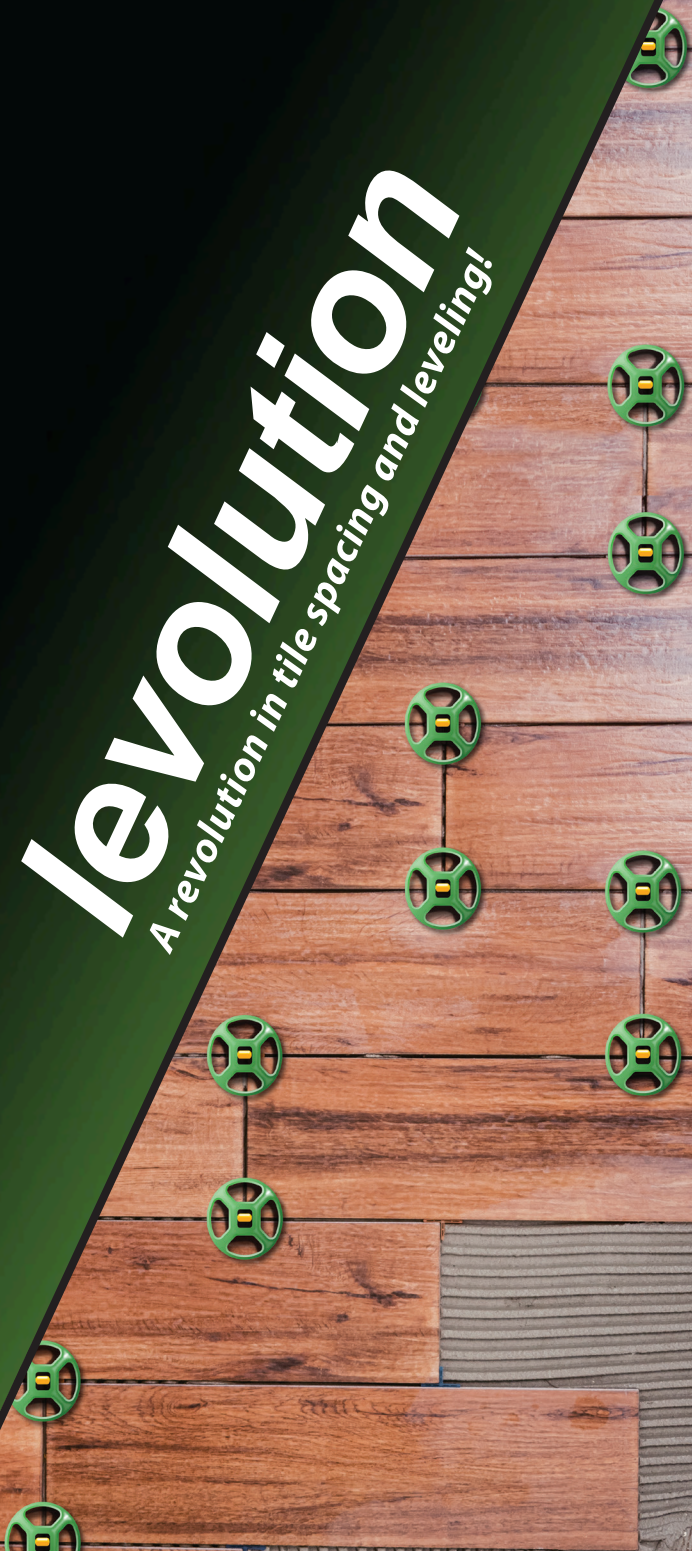




MIRACLE
Sealants Company

levolution

A revolution in tile spacing and leveling!



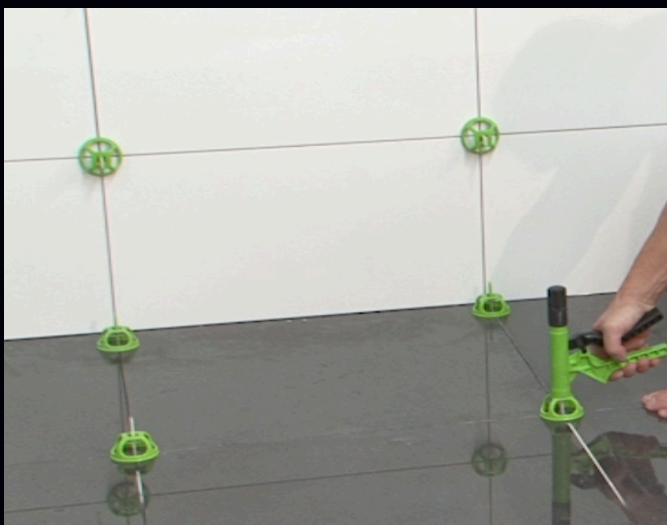
levolution

A Complete Tile Spacing & Leveling System in One!

The Efficient way to Space & Level Floor & Wall Tiles

Miracle Sealants Levolution is a revolution in Tile Spacing & Leveling Systems for all tiles, especially large-format tile. Levolution is an all in one system and can be used for both floor & wall installations! Its Spacer/Anchor comes in 3 sizes to accommodate for a 1/16", 1/8" or 3/16" grout joint. It comes in 3 different profiles which include Cross (+) for straight grid patterns, Tee (T) for brick grid patterns and Flat (-) for edges at walls for all patterns. Levolution can be used with tile or stone with thicknesses up to a 1/2" inch.

Levolution requires only one piece per intersection regardless of the tile size so you are laying tiles instead of extra spacers saving you time and money. Other systems on the market require up to 4 pieces per intersection and an additional piece every 12" with large format tiles. Levolution has the least expensive component cost per square foot and saves up to 51% in labor over other systems. Levolution allows anyone to install evenly spaced and level tiles and can be used by both the professional and DIY user. Join the revolution today!



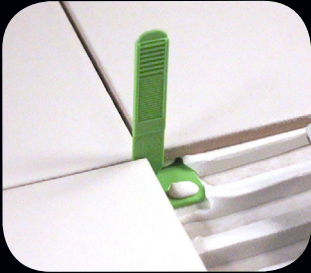
INSTALLATION:



STEP 1



STEP 2 - A



STEP 2 - B



STEP 3



STEP 4



STEP 5 - WALLS



STEP 5 - FLOORS



STEP 6

LET TILES FULLY SET



WALLS

On softer Natural Stones
& Tiles use Evolver Tool

ONLY to remove
Caps and Spacers.

The Universal Spacer/Anchor can be formed into a Cross profile (+) for straight grid patterns, a Tee profile (T) for brick grid patterns or a Flat profile (-) for edges at walls for all patterns. The Spacer/Anchor comes in the Cross profile. To adjust to another profile simply break off the small tab close to the base on either side (as shown in diagram). Removal of 1 tab will give you a Tee Spacer, removal of both tabs will give you a Flat Spacer.

STEP 1 Spread adhesive using a 1/2 in. (12.7mm) notch trowel.

STEP 2 Lay tiles and insert appropriate size (1/8", 3/16" or 1/16") Universal Spacer/Anchor removing the appropriate tab in order to get a Cross profile, a Tee profile or a Flat profile. Refer to paragraph one on how to adjust the Universal Spacer into different profiles.

STEP 3 After Spacers/Anchors are installed, place Caps over the Spacer/Anchor firmly.

STEP 4 Slide the Evolver Tool onto the Spacer/Anchor and pull trigger to apply tension between the Cap and tile until the Cap is firmly holding tile. The tension knob at rear of gun can be turned clockwise to decrease tension or counter clockwise to increase tension. This is adjustable so you can adjust for various thicknesses of tile or stone.

LET TILES FULLY SET (Per Manufacturer's Setting Material Instructions)

STEP 5 REMOVING REUSABLE CAPS & DISPOSABLE SPACER/ANCHOR

WALLS To remove Caps and Spacer/Anchors after tiles have fully set & cured, wind adjuster knob counter clockwise on the Evolver Tool to adjust to maximum tension. Place Evolver Tool back on Spacer/Anchor and pull trigger until Spacer/Anchor breaks off to fully remove.

FLOORS Spacers/Anchors can be kicked (parallel to the spacer) to break off in order to save time. Once Spacer is broken off Caps can be removed with the Decapper Tool for reuse. ***On softer Natural Stones & Tiles use Evolver Tool only to remove Caps and Spacer/Anchors as explained above for walls.***

STEP 6 To reuse Caps, insert Decapper Tool and place tapered end (tip) between the Cap and strap/anchor to loosen teeth. Slide the center slot through the Spacer/Anchor and hook under Cap. Push down with thumb while supporting the Cap with index finger and slide Cap upwards removing the Cap from the Spacer/Anchor. Discard the disposable Spacer/Anchor and keep Cap for reuse.

WALLS Always place Spacer/Anchor in a vertical position (cross as shown in diagram) or horizontal position (tee or flat) to avoid chipping tiles when removing.

SYSTEM COMPONENTS

CAP



Universal Caps that can be reused

DECAPPER TOOL



A tool that removes the used Spacers from the Caps so the Caps may be reused.

EVOLVER TOOL



A Tensioning Tool with adjustable knob.
Tensioning dial for accurate clamping.
Comfortable ergonomic handle & trigger.

REPLACEMENT TEETH



Evolver Tool Replacement Teeth

FLAT SPACER



CROSS SPACER



TEE SPACER



Spacer Size: 1/16in (1.5875mm) - Green

FLAT SPACER



CROSS SPACER



TEE SPACER

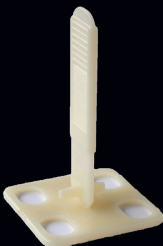


Spacer Size: 1/8in (3.175mm) - Yellow

FLAT SPACER



CROSS SPACER



TEE SPACER



Spacer Size: 3/16 in. (4.7625mm) - White

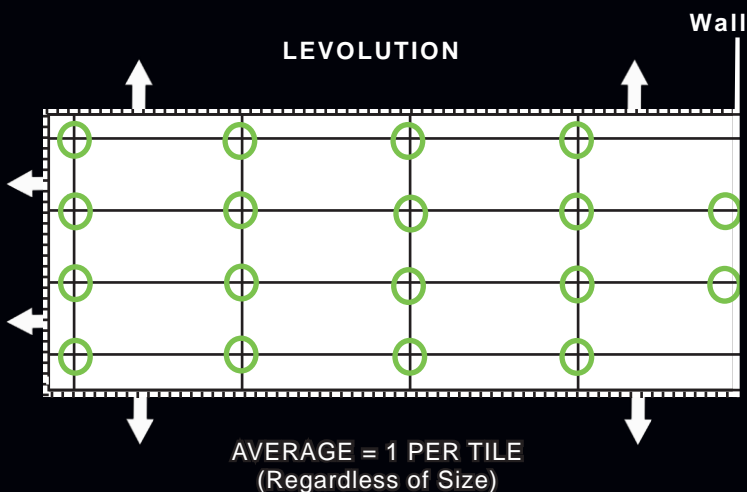
FLAT SPACER: Are used at Wall Edges

CROSS SPACERS: Are used in the intersections

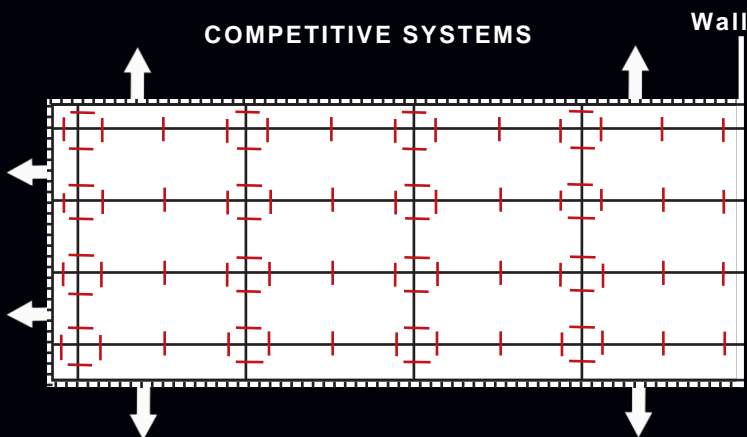
TEE SPACERS: Are used for brick bond projects

SYSTEM COMPARISON

LEVOLUTION



COMPETITIVE SYSTEMS



AVERAGE = Up to 4 PER SQUARE FOOT

When calculating pieces per square foot you have to take an average as shown in diagram above. However there is always a finishing point and a starting point (walls).

CONTACT

General Customer Service Number: 1-800-323-3584

Miracle Sealants General Product Support
(Tech Service) **Number:** 1-800-350-1901, ext. 1
(technicalsupport@miraclesealants.com)

General Customer Service Fax Number (for orders):
1-800-782-3369

Email address for orders: **Orders@rustoleum.com**



11 Hawthorn Pkwy., Vernon Hills, IL 60061
800-323-3584 miraclesealants.com